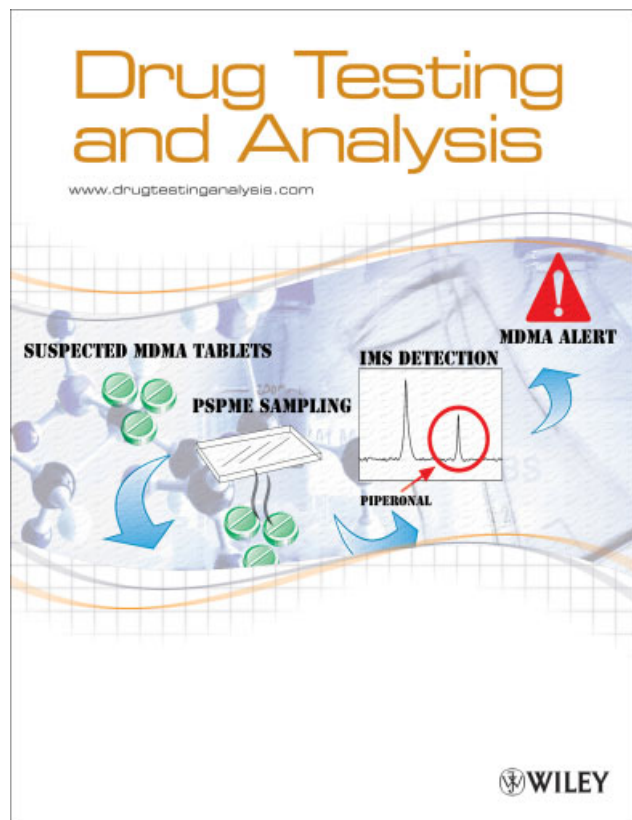


(www.interscience.com) DOI 10.1002/dta.85



The cover of this issue of *Drug Testing and Analysis* features an illustration of the article 'Enhancement in Sample Collection for the Detection of MDMA Using a Novel Planar SPME (PSPME) Device Coupled to Ion Mobility Spectrometry (IMS)' by S. Gura, P. Guerra-Diaz, H. Lai and J. R. Almirall.